

# MADICO®

The Clear Choice

## Window Film Installation Tools & Accessories



*If there is an item you don't see listed in this catalog, please ask us to special order it for you.  
Note: Some items featured in this catalog may require extended shipping time.*

Knives.....2

Blades .....3

Scrapers.....4

Squeegees & Accessories.....5

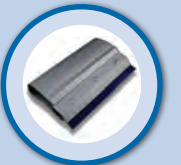
Hard Cards .....11

Installation Accessories .....13

Slitters & Accessories .....17

Paint Protection & Vinyl Tools.....18

Meters.....20





GT026N



GT027



**GT026N - A-553P Injector Cartridge Knife**  
Used for film pattern-cutting and trimming. Holds five blades for automatic blade replacement. (Knife comes with 5 30° angle blades.)

**GT027 - NT Pro A1 "Red Dot" Knife**  
The blade can be advanced in 1/2 segment increments for precision control. Right or left-handed use. Stainless steel blade.

**GT111 - Auto Lock 8 Pt. Knife**  
Heavy-duty knife with breakaway points for use with security films 7 mil or greater. Blade storage in handle. Uses GT112 blades.

**GT126 - Olfa® "Silver" Stainless Steel Knife**  
The original Olfa stainless steel knife.

**GT127 - Olfa Yellow A1 Knife**  
Used for film pattern cutting and trimming. Features a molded plastic handle for maximum control and comfort. Right or left-handed use.

**GT226 - Olfa "Silver 2" Auto-Lock Knife**  
Features right or left-handed use, blade position auto-lock, and one-segment click action. Stainless steel blade.

**GT227 - Olfa XA1 Ergonomic Knife**  
This ergonomically correct knife features a comfortable rubber grip for better control and less fatigue.

**GT944 - Automotive Glass Edge Trimmer**  
Ensures precise "micro-edge" along the top of roll-down windows. Uses GT137, 1" single-edge blades.

**GT984 - NT A1000RP Knife**  
Cartridge cutter with aluminum die-cast grip. Cartridge holds up to five blades.

**GT1019 - NT L500GRP Heavy Duty Knife**  
NT heavy duty knife with ratchet auto-lock slider which locks the blade into place while cutting. Blade storage in the handle. Use with 7 mil or greater films. Uses GT112 blades.

**GT1051 - Olfa SAC1 Stainless Steel Graphics Knife**  
Slim stainless steel body with a 30 degree angle blade for precision in pattern cutting. Great for graphics and paint protection. Use GT1052 replacement blades.

**Note:** All knives come packaged with carbon blades unless otherwise noted.

**Tip** Use a sharp blade every time to help avoid accidentally scratching the application surface by pushing down too hard on a dull blade. Be safe - always dispose of used blades by wrapping them in tape or depositing them into a blade collection container.

GT111



GT126



GT127



GT226



GT227



GT944



GT984



GT1019



GT1051



GT105



GT108



GT108SS



**GT105 - 4" Scraper Blades - Carbon, Pack of 10**  
Fits the GT104 4" scraper.

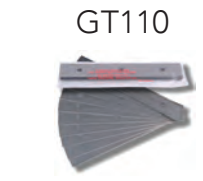
**GT108 - 6" Triumph Carbon Scraper Blades, Pack of 25**  
Double edged for more efficient use, these blades fit any of the standard 6" Triumph scrapers.

**GT108SS - 6" Triumph Stainless Steel Blades, Pack of 25**  
Long lasting, rust resistant, double-edged blades. Fits any standard 6" Triumph scraper.

GT108SS-HD



GT110



GT112



**GT108SS-HD - Triumph Heavy Duty Stainless Steel Blades, Pack of 25**  
The heavy-duty version of the 6" Triumph blade. Perfect for those tough jobs.

**GT110 - Heavy Duty Triumph Blades, Carbon, Pack of 10**  
Replacement blades for GT106, Red Heavy Duty Triumph scraper. Thicker blade for those tough jobs.

**GT112 - Olfa UltraMax 8pt. Blades, Pack of 50**  
Triple-honed for extremely sharp edge. Ideal for cutting thick films, 7 mil or greater. Pack of 50.

GT115



GT116



GT123



**GT115 - Olfa Stainless Steel Snap Blades, Pack of 10**  
Great for film and pattern cutting. Thirteen cutting edges per blade. Use in most standard duty knives.

**GT116 - Olfa Stainless Steel Snap Blades, Pack of 50**

**GT123 - Olfa Carbon Snap Blades, Pack of 50**  
The 9mm blade fits most standard duty knives and features thirteen cutting edges per blade.

GT135



GT134



GT137



**GT135 - Bladeater Pro**  
Designed for professional installers, the Bladeater Pro holds your knife safely and securely and allows you to easily snap off and discard used blades into the replaceable well. Once the well is full, you can throw it away.

**GT134 - Bladeater Pro Replacement Well**  
Disposable replacement well for the Bladeater Pro. Simply fill with used blades and safely throw away.

**GT137 - Stainless Steel 1" Single Edge Blades, Pack of 100**  
Use in any 1" blade holder. Stainless steel, uncoated.

GT140



GT140-12



GT211



**GT140 - 1" #9 Single Edge Blades, Carbon, Pack of 100**  
Use in any 1" blade holder.

**GT140-12 - 1" #12 Single Edge Blades, Carbon, Pack of 100**  
A thicker version of the popular #9 blade.

**GT211 - 3" Triumph Blades, Carbon, Pack of 10**  
For use in the 3" Triumph scraper, GT210

GT1007



GT1052



**GT1007 - 4" Scraper Blades, Pack of 100**  
Carbon steel. (0.17mm x 4")

**GT1052 - A1160B Carbon 30 Degree Snap-off Blades, Pack of 10**  
Standard duty acute angle snap-off blade for use when precision is a must. Seven cutting edges per blade strip. Fits GT1051.





GT104



GT106



GT107



GT107A



GT107PC



GT109



GT138



GT210



GT212



GT983



GT983A



**GT104 - 4" Scraper With Extended 12" Handle**  
Longer handle allows for even more leverage. Use GT105 for replacement blades. Includes blade cover.

**GT106 - 6" Red Heavy Duty Scraper**  
Ideal for film removal. Uses GT110 Heavy Duty Triumph Blades. Includes double-edged blade and cover.

**GT107 - 6" Triumph Scraper**  
This lightweight scraper includes a double-edged blade and cover.

**GT107A - 6" Angled Triumph Scraper**  
The handle has a 30 degree angle. Includes a double-edged blade and cover.

**GT107PC - 6" Triumph Scraper With Slide Cover**  
This is the new and improved version of the slide-covered Triumph scraper. With a bigger button and smoother action, the cover easily opens and closes with no hassle. No more fumbling with a separate blade cover, which is safer and more convenient, especially when doing ladder work. Great for regular window cleaning, but not recommended for stripping off old film.

**GT109 - 1" Clip Scraper**  
This effective scraper will accommodate standard 1" single-edge blades, plastic blades or even a 'Lil Chizler.

**GT138 - Heavy Duty 1" Razor Scraper**  
Retractable safety scraper with intermediate blade position keeps the blade from sliding out while in use.

**GT210 - 3" Triumph Scraper**  
Smaller version of the regular 6" Triumph scraper. Designed to fit more easily into corners.

**GT212 - 1" Mini Scraper (assorted neon colors)**  
Uses standard 1" blades. Good for getting into tight spaces.

**GT983 - 6" Ergonomic Triumph Scraper**  
Rounded corners for a more comfortable grip. Includes cover and a double-edged blade.

**GT983A - 6" Angled Ergonomic Triumph Scraper**  
Angled for a better performance in tight spaces. Includes cover and a double-edged blade.

**Tip** Use the right scraper for the job. Small scrapers are better for reaching into corners on automotive windows and large scrapers are good for cleaning flat glass.



GT032G ★



GT032Y ★★



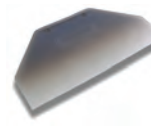
GT033



GT034



GT035



GT036



GT037



GT040



GT041



GT042



GT043



GT044 ★★



GT044BLK ★★ ★



GT044BLU ★



GT045, GT048, GT049



GT050



GT050A



GT050E



**GT032G - Tail Fin Green (Soft)**  
Great for getting behind brake lights during rear window installations and other hard-to-reach areas. Finger holes make holding onto the Tail Fin easy.

**GT032Y - Tail Fin Yellow (Flex Firm)**

**GT033 - Red Devil Squeegee**  
Flexible squeegee that is great for tight corners and maneuvering around gaskets.

**GT034 - Whale Tail Squeegee**  
Great for getting behind brake lights during rear window installations and other hard-to-reach areas.

**GT035 - Whale Tail Replacement Blade**

**GT036 - Whale Tail Handle**

**GT037 - Fusion Hand Dee Tool**  
The Fusion Hand Dee Tool is a magnetic handle that can accommodate any 5"x 2" squeegee. Equipped with a removable "jaw" and a rounded grip to fit perfectly in your hand. Can be used with any 5" squeegee blade.

**GT040 - Slim Foot**  
Modeled after the Big Foot Squeegee, the Slim Foot has a slender design that can reach into tighter openings. This no-rib squeegee helps reach behind brake lights and has a rubber grip for secure handling. Measures 15" from blade tip to handle end.

**GT041 - 8" Silver Security Squeegee Replacement Blade**

**GT042 - 8" Silver Security Squeegee**  
Comfortable, ergonomic handle is designed especially for security film installation. Curved handle applies more pressure to surface, reducing fatigue and ensuring easier, better installations. Blade is replaceable with either the Security Squeegee (GT041), or Pro Squeegee (GT061) blades. GT041 blade is included.

**GT043 - Big Foot**  
Designed to more easily remove water from the lower portion of rear window glass, this squeegee measures a full 15" long and features a flexible, firm blade. The handle features SofTac grip material for better control.

**GT044 - Little Foot Red, GT044BLK - Black & GT044BLU - Blue**  
These squeegees feature a unique shape which allows for better handling in tight spots such as the corners of rear windows and around gaskets. Just like the Big Foot without the handle. 6" long on usable edge.

**GT045 - 140" Squeegee Blade Refill**  
Replacement blades for Unger squeegee channel. Used for window cleaning, not installation.

**GT048 - 12" Squeegee Blade Refill**

**GT049 - 18" Squeegee Blade Refill**

**GT050 - Unger Pro Handle**  
For use with the GT053, GT055 or GT056 stainless steel channel with black rubber blade for cleaning or blue blade (GT118) for installation.

**GT050A - Unger Pro Handle (screw back)**  
A modified Unger handle that has proven results for maximum water extraction. For flat glass applications use with the new Extruder channels (GT252 & GT253). This handle also works well with the Super Clear Max, Blue Max and Orange Crush Squeegees.

**GT050E - Unger ErgoTec Handle**  
Features a spring mechanism for quick blade changing and a finger indent on top of the handle for complete control. For use with GT053, GT055 and GT056 channels with black rubber for cleaning or blue replacement blades (GT118) for installation.

**Tip** Try the softer GT032G Tail Fin for paint protection installations.

**Durometer Legend**

★ Soft  
★★★★★ Hard



GT053, GT054  
GT055, GT056



GT057-5



GT058-8



GT053 - 6", GT054 - 8" GT055 - 12", GT056 - 18" - Squeegee & Channel  
Stainless Steel channel and soft rubber squeegee blade insert for use  
with the Unger Pro Handle (GT050). Used for cleaning during flat glass  
installations.

**GT057-5 - 5" Fusion Stretch Handle**  
The 5" Fusion Stretch handle is the latest design for installing flat glass  
and security films. This handle features a 14-1/2" metal extension and  
two rubber grip sections for maximum water removal.

**GT058-8 - 8" Fusion Stretch Handle**

**GT059 - 8" Flatfoot Squeegee Blade**  
Specially angled blades for the Pro Squeegee (GT062 or GT064). The  
angle is designed to maximize the surface area in contact with the film,  
thereby removing much more mounting solution than a standard Pro  
blade with a square edge.

**GT060 - EZ Wing Lime (Flex Firm)**  
Unique chizler tip that enables you to flip it over to chisel out those  
stubborn creases or dust spots. It also has increased stiffness across  
the nose of the tool. This will allow you to apply more pressure out at  
the tip in those situations where you are reaching into a tight spot.

**GT061 - 8" Pro Squeegee Blade**  
Replacement blade for 8" Pro Squeegee (GT064). Used for removing  
application solution from beneath the film during flat glass installation.

**GT062 - 6" Pro Squeegee Deluxe**  
An installation squeegee as a ready-to-use assembly. Used to  
remove application solution from beneath the film during flat glass  
installations.

**GT063 - 6" Pro Squeegee Blade**  
Replacement blade for 6" Pro Squeegee (GT062). Used for removing  
application solution from beneath the film during flat glass installation.

**GT064 - 8" Pro Squeegee Deluxe**  
An installation squeegee as a ready-to-use assembly. Used to  
remove application solution from beneath the film during flat glass  
installations.

**GT091 - Slammer**  
Used for cleaning corners and along gaskets, wicking water out along  
borders and easily reaching rear windows.

**GT092 - Shuttle**  
A hard card with the ability to reach into tight areas located at the  
bottom edge of rear window glass.

**GT117 - Blue Max 5" Hand Squeegee**  
Installation squeegee for automotive and flat glass applications.  
Harder than GT203, these tools are excellent for water evacuation.

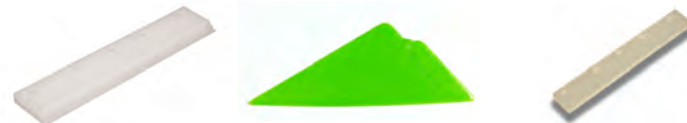
**GT117-8 - Blue Max 8" Hand Squeegee**  
The favored Blue Max installation squeegee is now available in 8"  
making it perfect for flat glass installs! Use this blade in the 8" Fusion  
Handle (GT1046) for great water extraction.

**GT117A - Angled Blue Max 5" Hand Squeegee**  
Angled version of the Blue Max 5" Hand Squeegee.

**GT117B - Square Blue Max 5" Hand Squeegee**  
Ideal for installing security film.

**GT118 - 120" Blue Squeegee Refill**  
Use in the Unger squeegee channel as a finishing squeegee for  
maximum water removal. Used as a replacement blade for GT207.

GT059 GT060 ★★ GT061



GT062 GT063 GT064



GT091 GT092



GT117 ★★★ GT117-8 ★★★ GT117A ★★★



GT117B ★★★ GT118-120



GT122



GT145 ★★★★★



GT147 ★★★★★



GT148



GT149



GT150 ★★★★★



GT151 ★★★



GT151B ★



GT151W ★★



GT153  
ORANGE ★



GT153  
YELLOW ★★



GT154  
ORANGE ★



GT154  
YELLOW ★★



GT178



GT202 ★



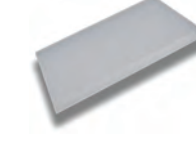
GT202B ★★



GT203 ★★



GT203A ★★



**GT122 - Blue Max Squeegee with Handle**  
New and improved handle makes this installation squeegee a must  
have. This unit is sold as a complete set with the GT117A only.

**GT145 - 18-1/2" Yellow Turbo Squeegee**  
Used for removal of application fluid during installation.

**GT147 - 18-1/2" Yellow Turbo Squeegee Replacement Blade**  
Economy size squeegee usually cut to shorter lengths before use.  
Used for removal of application solution during the installation  
process.

**GT148 - 6" Block Squeegee**

**GT149 - 12" Block Squeegee**

**GT150 - 18" Red Turbo Squeegee**  
Used for removal of application solution during the installation  
process.

**GT151 - Yellow Quick Foot (Firm)**  
The Quick Foot is a firm squeegee with a handle for jobs that require  
medium reach. Comes in firm, flex firm and soft for all applications.

**GT151B - Blue Quick Foot (Soft)**

**GT151W - White Quick Foot (Flex Firm)**

**GT153 ORANGE - Grip-N-Glide Orange (Soft)**  
New Grip-N-Glide combines an ergonomic handgrip with high  
performance, interchangeable blades to give you just what you need  
for tint, wrap and PPF installations.

**GT153 YELLOW - Grip-N-Glide Yellow (Flex Firm)**

**GT154 ORANGE - Grip-N-Glide Replacement Blade, Orange (Soft)**  
The Grip-N-Glide features a .24" thick squeegee blade with French  
edges that are machine milled for maximum water extraction.

**GT154 Yellow - Grip-N-Glide Replacement Blade, Yellow (Firm)**

**GT178 - The Reach**  
The Reach allows you to squeegee water from the bottom of the back  
window or windshield with ease. Made from special plastic and rubber,  
this 16-3/4" long, four-sided squeegee features dual durometer edges  
for maximum installation flexibility.

**GT202 - The Conqueror (Soft)**  
The Conqueror is the original corner reaching tool. Features a soft  
squeegee blade along one edge and a pointed hard card tip making it  
a versatile tool for any job.

**GT202B - Blue Conqueror (Firm)**  
Same as the original Conqueror with a slightly harder durometer for  
more squeegeeing power.

**GT203 - Super Clear Max Squeegee Blade**

**GT203A - Angled Super Clear Max Squeegee Blade**  
Softer version of the Blue Max squeegee; more flexible for rear  
window installations.





GT204 ★★



GT205



GT206



**GT204 - Super Clear Max Squeegee with Handle**  
New and improved handle makes this installation squeegee a must have. This unit is sold as a complete set with the GT203A only.

**GT205 - The Bulldozer I - Automotive**  
Allows you to get to those hard-to-reach areas such as behind speakers, brake lights and low-angled rear windows. Features a 6" squeegee blade and is 15" in overall length.

**GT206 - The Bulldozer II - Flat Glass**  
Features reinforced ribs on the back side for extra rigidity and leverage. Includes a 6" squeegee blade and is 15" in overall length.

GT207



GT235 ★★★★★



GT236 ★★★★★



**GT207 - Side Swiper with blade**  
6" squeegee used to help you reach into corners and odd angles. Use GT118 as a replacement blade.

**GT235 - 5-1/2" Yellow Turbo Squeegee**  
An installation squeegee used to remove application solution during installation of all auto and paint protection films.

**GT236 - 5-1/2" Yellow Turbo Squeegee - Blade Only**

**GT252 - The Extruder, 6" Extruder Channel Only**  
This channel works in your existing Unger handles, but it is fully designed to give the blue squeegee blade added stiffness and a better angle to aid in laying down the film and extracting more water per squeegee pass. Use GT118 as a replacement blade.

**GT253 - The Extruder, 8" Extruder Channel Only**

**GT254 - Power Stroke Blue, 96 Durometer (Hard Flex)**  
The original hand held molded squeegee, designed to fit comfortably in your hand. Measures 5.7" from tip to tip. Blue has a durometer for the ultimate in moisture removal, especially for sputtered films.

**GT256 - Power Stroke, Yellow (Soft Flex)**  
Yellow Power Stroke works well with dyed films and first pass on metal films.

**GT257 - 5" Orange Crush Squeegee**  
These blades help expel water from under film while keeping their strength. The 5" Cropped Orange Crush conforms to curved glass. Blades can fit into a handled grip (GT1046, GT1047 or GT1058) or can be used alone.

**GT258 - 5" Cropped Orange Crush**

**GT259 - 8" Orange Crush**

**GT260-5Y - 5" Yellow Flat Out Blade**  
The Yellow Flat Squeegees are available in both 5" and 8" lengths. Slightly harder than the Orange Crush and comparable in hardness to the Blue Max products, they work great in flat glass and security applications. For best results try in Fusion Handle, Fusion Stretch series and Thor's Hammer.

**GT261-8Y - 8" Yellow Flat Out Blade**

**GT985 - Performax Handle**  
Ideal for water extraction when used with GT117, GT117B and GT203 blades.

**GT1006 - Thor's Hammer**  
Use for 6-mil+ safety film installations, and final pass on slow drying thin films.

**GT1022 - Stroke Doctor**  
Designed with I-beam construction handle and features an ergonomic, slip-resistant grip and longer blade to apply squeegee pressure more evenly in the most hard to reach places.

**GT1022B - Stroke Doctor Replacement Blade**

GT985



GT1006



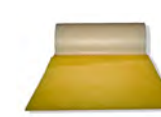
GT1022



GT1022B



GT1026 ★★★★★



GT1042



GT1046



**GT1026 - 3-1/2" Yellow Turbo Squeegee**  
Used to remove application solution during installation of all auto and paint protection films.

**GT1042 - Titan Squeegee, Red**  
Overall length is 14-3/4" which allows a longer reach, has a rigid structure for more water removal and it's unique design will easily lift inner and upper door seals.

**GT1046 - Fusion Grip, 8"**  
Ideal handle for all residential and commercial applications. Holds the 8" Orange Crush Squeegee Blade (GT259) and 8" Blue Max Squeegee Blade (GT117-8).

**GT1047 - Fusion Grip, 5"**  
This handle is designed to optimize your leverage in removing mounting solution. Great for high performance automotive films and smaller residential windows. This handle accommodate the 5" Orange Crush Squeegees (GT257 or GT258 above) and the 5" Blue Max (GT117) and Clear Max (GT203) Squeegees.

**GT1049 - Gator Blade I**  
The Gator Blade is an alternative to the Lil Chizler. Each has a unique shape to give you a better grip making it easier to apply pressure.

**GT1058 - Fusion Grip 5" Short Handle**  
These handles are designed to optimize your leverage in removing mounting solution. These handles accommodate the 5" Orange Crush Squeegees (GT257 or GT258) and the 5" Blue Max (GT117) and Clear Max blades. (GT203) squeegees.

**GT2043 - Tri-Edge Plus**  
Tri-Edge Plus features a rubber squeegee edge.

**GT2056B - Blue Go Doctor (Firm)**  
A fully integrated squeegee system where all of its components have been designed together, to work together. The I-beam handle fits comfortably in your hand and is wrapped with a comfortable, non-slip material that provides a secure grip. Go Doctor's unique frame construction was specifically designed to transfer more of your energy to the blade's point-of-contact for greater efficiency and reduced installer fatigue. Go Doctor incorporates a quick-change blade system for speedy on the job replacements.

**GT2056R - Red Go Doctor (Soft)**

**GT2056Y - Yellow Go Doctor (Flex-Firm)**

**GT2057B - Go Doctor Replacement Blade, Blue (Firm)**

**GT2057R - Go Doctor Replacement Blade, Red (Flex-Firm)**

**GT2057Y - Go Doctor Replacement Blade, Yellow (Soft)**

**GT2057D - Dual Density Go Doctor Replacement Blade**  
Replacement blade for any Go Doctor Handle. The Dual Density blade is double sided and reversible. 85A RED, 95A BLUE

**GT2063 BLUE - Tri-Edge X Blue (Soft)**  
Tri-Edge X Blue is a new larger size of the GT2042 Blue. The angles have been recalculated and extended into a bigger tool. All of the durability and quality of the Tri-Edge tool is now made to make those deep gaskets and hard to reach spots more accessible.

**GT2063 ORANGE - Tri-Edge X Orange (Hard)**  
Tri-Edge X Orange is a new larger size of the GT2042 Orange

**GT2063 - Tri-Edge X Pink**  
The new rubberized, heat resistant material is designed to squeegee water and to smooth film in hard to reach places. This newly formulated material works best on wet surfaces.

**GT2063 YELLOW - Tri-Edge X Yellow (Medium)**  
Tri-Edge X Yellow is a new larger size of the GT2042 Yellow

GT1047



GT1049



GT1058



GT2043



GT2056B ★★★★★



GT2056R ★



GT2056Y ★★



GT2057B ★★★★★



GT2057R ★



GT2057Y ★★



GT2057D



GT2063 BLUE ★



GT2063 ORANGE ★★★★★



GT2063 PINK ★★



GT2063 YELLOW ★★





**GT2072-4 - 4" Lime Speed Wing (Hard)**  
The Speed Wing is designed with "wings" to enable the installer to reach areas typically out of the reach of most bump, bondo, Teflon and hard cards. The Speed Wing comes with one flat edge and one curved edge. Speed Wing is made from materials that enable it to slide across most film surfaces easily while maintaining its rigidity to lay the material flat and remove moisture or air trapped underneath.

**GT2072-6 - 6" Lime Speed Wing (Hard)**

**GT2072-8 - 8" Lime Speed Wing (Hard)**

**GT2076-4 - 4" Lemon Speed Wing (Flex Firm)**

**GT2076-6 - 6" Lemon Speed Wing (Flex Firm)**

**GT2076-8 - 8" Lemon Speed Wing (Flex Firm)**

**GT2077-4 - 4" Cherry Speed Wing (Soft)**

**GT2077-6 - 6" Cherry Speed Wing (Soft)**

**GT2077-8 - 8" Cherry Speed Wing (Soft)**

**GT2081B - Smooth-it With Grey Mat**  
This tool is designed to effectively and evenly smooth out the edge of most tools used for film installation. It works great on plastic and rubber tools. The black mat is a medium fabric that works best and faster on big or deep scratches in the tool's edge. Replacement mats can be purchased as part GT2082B.

**GT2081G - Smooth-it With Grey Mat**  
This tool is designed to effectively and evenly smooth out the edge of most tools used for film installation. It works great on plastic and rubber tools. The grey mat is a fine fabric that is ideal for removing small or light scratches from the tool. Replacement mats can be purchased as part GT2082G.

**GT2082B - Smooth-it Black Mats (3 replacement pieces)**

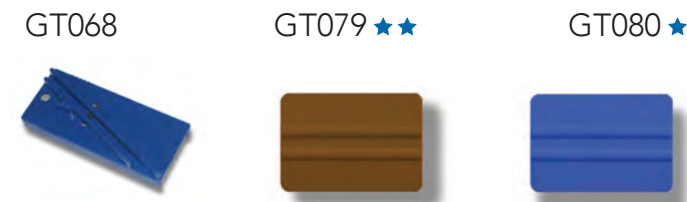
**GT2082G - Smooth-it Grey Mats (3 replacement pieces)**

**GT2085 PINK - Fusion Pink Turbo Pro 3-1/2"**  
Features large, grey handle. 77 durometer. Super soft, recommended for paint protection films and cleaning.

**GT2085 YELLOW - Fusion Yellow Turbo Pro 3-1/2"**  
Features large, grey handle. 85 durometer. Recommended for vinyl applications and areas that require more pressure.

**GT2087 PINK - Fusion Pink Turbo Pro 5-1/2"**  
Features small, white handle. 77 durometer. Super soft, recommended for paint protection films and cleaning.

**GT2087 YELLOW - Fusion Yellow Turbo Pro 5-1/2"**  
Features small, white handle. 85 durometer. Recommended for vinyl applications and areas that require more pressure.



**GT068 - Hard Card Sharpener**  
A must-have item for keeping hard card edges smooth.

**GT079 - 4" 3M™ Gold Squeegee**

**GT080 - 4" 3M™ Blue Squeegee**

**GT083 - Lil' Chizler**  
Ideal for removing decals, film or adhesive from sensitive surfaces. Use for pressing down small film creases or air bubbles.

**GT083W - White Chizler**  
The White Chizler is slightly larger, has thicker edges and is harder than the original pink Lil Chizler.

**GT086 - White Hard Card Squeegee**

**GT086BLK - Black Hard Card Squeegee**

**GT086BLU - Blue Hard Card Squeegee**

**GT086GLD - Gold Hard Card Squeegee**

**GT086PINK - Pink Hard Card Squeegee**

**GT086PURPLE - Purple Hard Card Squeegee**

**GT086PLT - Platinum Hard Card Squeegee**

**GT086-6W - 6" White Hard Card Squeegee**

**GT086Y - 6" Yellow Hard Card Squeegee**

**GT087 - Yellow Lidco Squeegee**





GT087GRAY ★★ GT087-6GRAY ★★ GT099 ★★★



GT087Gray - Gray Lidco Squeegee

GT087-6 Gray - 6" Lidco Squeegee

GT099 - Universal Squeegee

GT113WHT ★★★★★ GT113YLW ★★★★★ GT200 ★★★★★



**GT113WHT - White Diamond Tip, (Hard)**  
Designed to meet the challenge of hard to reach areas, with square edges and 20 degree angled corners on both sides. The raised area in the center gives you a secure, slip-resistant grip, even when wet. Ideal for bumping edges, and use during shrinking because of their high heat resistant material.

GT113YLW - Yellow Diamond Tip, (Soft)

GT200 - EZ Reach Gold  
EZ Reach is the ultimate corner tool.

GT200 PLT - EZ Reach Platinum

GT200PLT ★★★★★ GT201G ★ GT201PLT ★★★★★



GT201G - Green Contour (Soft)  
Uniquely-shaped tool for hard-to-reach areas.

GT201PLT - Platinum Contour (Hard)

GT201Y - Yellow Contour, (Firm Flex)

**GT1070-P Platinum Smart Card**  
The modern version of the hard card squeegee, only better! 25% wider than a hard card, with a tapered tip, comfortable grip and thin squeegee edge make it the smartest tool in your apron. Great for sliding under gaskets and seals. Use Smart Cards anywhere you'd use hard card squeegees.

GT201Y ★★ GT1070-P



**GT2003 - Original EZ Reach Gold, (Firm Flex)**  
Stop cutting down hard card squeegees and use this versatile tool instead. These triangular cards with flat edges are perfect for putting down those little corners of film in hard to access areas. The gold version is flex-firm while the platinum offers a hard card texture with internal lubrication technology to help prevent scratching. EZ Reach is the ultimate corner tool.

GT2003PLT - Original EZ Reach Platinum, (Hard)

GT2003 ★★★★★ GT2003PLT ★★★★★



516602 A910010 DOTRIX



516602 - Madico 30-1 Application Solution, Gallon  
Concentrated mounting solution. Can also be used for cleaning glass and as a squeegee lubricant.

516602-4 - Madico 30-1 Application Solution, Gallon, Case of 4 (not shown)

A910010 - Ultra-Bond Mounting Solution, Gallon  
Concentrated mounting solution. Can also be used for cleaning glass and as a squeegee lubricant.

A910010-4 - Ultra Bond 4-Gallon Case (not shown)

Dotrix - Dot Matrix Vinyl 16" x 50' Roll  
Gives the dot matrix area on cars a smooth, finished look. Pressure-sensitive adhesive requires no heat shrinking.

GT070 GT071 GT072



GT070 - Continuous Roll Low Lint Wipes  
Center Pull Towels, 2 Ply, 8" x 605', 660 sheets/roll, 3" core diameter.

GT071 - Virtually "Lint Free" Reusable Wipes

GT072 - Towel Dispenser  
For use with GT070.

GT075 - Yellow Film Marker  
Handy for 3 basic purposes:

- 1) Marking film prior to installation of windows with unusual shapes (arches, trapezoids, etc.) which must be cut to approximate shape before the final "lay-up".
- 2) Circling a contaminant (hair or fiber) before pulling back the film to remove it.
- 3) Marking film edges to check for glass movement on side roll-ups during the trimming process. Yellow grease mark easily wipes away.

GT075 GT076 GT077



GT076 - Film Opaquer Pen, Thin Point  
Used by installers to hide fine line mistakes in trimming which causes excess light intrusion at the film edge.

GT077 - Film Opaquer Pen - Broad Point  
For hiding larger gaps after trimming.

GT078 GT078-75 GT085 & GT085 THK



GT078 - 1-1/2" Black Acrylic Felt - 50' Roll  
Helps reduce scratching of automotive films on some vehicle roll-down windows.

GT078-75 - 3/4" Black Acrylic Felt - 50' Roll

GT085 - White Scrub Pads  
Great for cleaning windows before installation.

GT085-THK - 1" Thick Scrub Pad, 4.5" x 10"

GT090 GT096 GT097 - GT098N



GT090 - Spraymaster Bottle & Trigger  
An overall heavy-duty sprayer, this spray bottle comes with a five-year warranty and is chemically resistant. It is equipped with a strong trigger and holds 32 ounces.

GT096 - Polyspray 2  
This pressurized spray bottle holds 1.25 liters (42 oz.) and reduces "finger fatigue," eliminating the need for pumping while spraying. Handy for large windows and long-duration sprays. Adjustable spray nozzle.

GT097 - 32 Oz. Spray Bottle  
Goes with GT098, adjustable spray trigger.

GT098N - Adjustable Spray Trigger  
The industry favorite for its ergonomic trigger, high output and durability. Goes with GT097, 32 oz. spray bottle.

**Tip** Use a large capacity pressurized sprayer for big jobs to reduce hand fatigue and save time.





GT101-H GT101N GT1038



GT101-H - Replacement Spray Gun for GT101-N

GT101-N - Stainless Steel 5 Gallon Sprayer  
Deluxe pressure sprayer holds up to 5 gallons of mounting solution in a stainless steel tank. The hose can reach up to 25 feet. Fill with solution and pressurize with air from any compressor. Flexible hose reaches into cars or stretches up the ladder with you.

GT1038 - Gilmore Nozzle  
Brass tip Gilmore nozzle. Use with flex line hose. (Does not fit on the GT101-HG hose.)

GT101-HG GT1038-HG



GT101-HG - Replacement Hose and Spray Gun for GT101N  
25' coiled hose.

GT1038-HG - Gilmore Nozzle and Hose Assembly  
15' flex line hose and Gilmore nozzle assembly for 5 Gallon Stainless Steel Sprayer.

GT102 GT102P GT2012

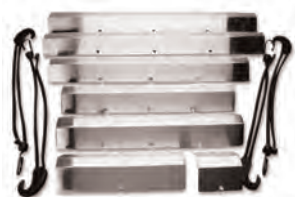


GT102 - Orange 3 Gallon Pressure Sprayer  
Essential for those big commercial jobs. Long 13' hose allows great mobility and the large tank capacity provides uninterrupted and fatigue-free installation.

GT102-P - Replacement Pump for Orange 3 Gallon Sprayer  
Replacement pump for GT102.

GT2012 - Nozzle for Pressure Sprayer (GT102)  
Replacement nozzle for the GT102, 3 Gallon Pressure Sprayer.

GT130



GT130 - Gasket Wizard  
This device is used to carefully pull back gaskets for easy installations below the gasket. Rub rails are located at the base of all automotive window glass for weatherproofing and can get in the way of installation. Many installers find the Gasket Wizard helpful even without the use of the bungee cords.

GT132 - Hook Tool  
Use this to pull back rubber gaskets on car windows so you can tuck film below the seal.

GT157 - 1/2" Black Out Tape, 150' Roll  
Black matte vinyl tape used to hide small light gaps along edges.

GT158 - 1" Black Out Tape, 150' Roll

GT159 - 1-1/2" Black Out Tape, 150' Roll

GT160 - Film Guard, 19 oz.  
Used after film installations as a cleaner and polish. Helps reduce friction and condensation between film and rubber gaskets on roll-down windows.

GT162P - Easy Stripper II Adhesive Remover, Gallon  
Used to soften film adhesive left on glass. Caution: GT162P contains chemicals which may damage some car interiors.

GT176 - Waist Apron, Black (plain)  
Heavy duty waist apron for easy access to tools while on the job. Features 3 pockets and loops on each side for sprayers.

GT132 GT157, GT158, GT159



GT160 GT162P GT176



**Tip** Use chemicals with caution. Take care to protect your skin as well as surrounding surfaces. Always keep a few wipes or paper towels handy to catch any spills.



GT186 GT187 GT190



GT186 - 8" Triangle  
30/60 degrees with circle templates.

GT187 - 12" Triangle  
45/90 degrees with circle templates.

GT190 - Gray 5-Way Trim Guide  
Use these tools as a trim guide or wrap in paper towels and use as a bump tool. Each of these offers unique shapes and corners.

GT190BLACK GT190WHITE GT191



GT190Black - Black 5-Way Trim Guide

GT190White 5-Way Trim Guide  
The GT190 White even features a ruler.

GT191 - The Edge Tool  
A convenient trim guide or use the curved edge to pull back gaskets.

GT194 GT194BLUE GT209



GT194 - Gasket Push Stick

GT194BLUE - Blue Gasket Push Stick

GT209 - The Scrubber  
Used to reach behind brake lights and speakers. Easily scrub away adhesive along the bottom of sloped back windows. Uses standard white scrub pads (GT085) cut to 2" x 3" size. The overall size of this tool is 3" wide by 15" long.

GT250



GT250 - Wagner HT1000 Heat Gun (120-Volt)  
Standard heat gun with low, medium and high settings.

GT251



GT251 - Wagner HT3500 Digital Heat Gun (120-Volt)  
This model allows you to heat shrink in low or high fan speeds and has a variable temperature setting to fine-tune the amount of heat needed for specific applications.

GT715



GT715 - Sprayway® Glass Cleaner, 19 oz.  
Amonia-free aerosol spray used for cleaning filmed surfaces after installation.

GT921



GT921 - Jiffy Steamer Film Remover  
The Jiffy Steamer is a commercial-grade steamer that is impact resistant with a 1300-watt heating element. It heats up in two minutes and provides up to two hours of steam per fill-up. Great for removing film and adhesive from rear automotive windows. (120-Volt. Alternate voltage available upon request.)

GT981



GT981 - "Do Not Roll Down" Window Stickers (1000/Roll)  
Features low-tack adhesive for easy removal by the customer.

GT1008



GT1008 Impact Jr. Pump-Up Sprayer  
Pressurized spray bottle that holds 48 ounces and reduces "finger-fatigue," eliminating the need for pumping while spraying via a simple trigger. Has adjustable spray nozzle.

**Tip** 5-Way tools are also effective as edge squeegees when wrapped with low-lint towels for absorbing extra moisture along the edges of glass.



GT1034



GT1035



GT1036



**GT1034 - Dot Devil Glass Prep Solution, 32 oz.**  
Dot matrix prep solution used to aid film adhesion on dot matrix areas of glass on auto installs.

**GT1035 - Blue Slip-up Cleaner/Application Solution, Gallon**  
Lubricant for easier film installation.

**GT1036 - Simple Pink Adhesive Remover, Gallon**

**GT1066 Copper Mesh Pad**  
The Copper Mesh Pad is for dot matrix prep ONLY! It will ABSOLUTELY scratch glass.

**GT1067 Mercury Pro Plus Trigger & Bottle**  
The next generation in spray bottles, the Mercury Pro Plus features Viton® seals and a double action pump that sprays both when you pull back and when you release the trigger giving you more liquid with each pull. This lightweight, ergonomic trigger/bottle combo holds up to 1 liter (33 ounces) of fluid.

**GT1080 - Ergodyne Waist Apron**  
13 pocket, heavy duty tool apron with 2 loops for spray bottles and adjustable buckle closure.

**GT1096 - Do Not Roll Down Tape, Roll**  
Approximately 200 stickers per roll.

**GT2021 - Teflon Tape, 3/4" x 12 Yards**  
Teflon tape is the ultimate product for making your application squeegees glide smoothly and safely across window film, paint protection film, car wraps and vinyl graphics.

**GT2121-4 - Teflon Tape, 3/4" x 4 Yards**

**MOLD5 - Molding & Trim Removal Tools, 5 Pieces**  
The kit includes five distinctive tools for the easy removal of body fasteners, interior trim pieces, exterior body moldings, wheel hub caps, etc. Made from heavy-duty plastic to prevent scratching and damage to vehicle surfaces.

**MOLD11 - Molding & Trim Removal Tools, 11 Pieces**  
This expanded trim removal kit includes eleven tools and comes with a carrying case.

**SS-OG - Soak Shield Rope Original**  
The window tinting industry's first and only absorbent rope braid used for absorbing water running down behind the dash of a vehicle while installing film. Help protect electronics and other parts from water damage by tucking the rope between the bottom of the windshield and the dashboard.

GT1066



GT1067



GT1080

GT1096



GT2021



GT2121-4



MOLD5



MOLD11



SS-OG



GT821



GT822



**GT821 - Blade Holder for GT822**

**GT822 - 72" Box Slitter Channel**  
Aluminum U-channel for sliding over the edge of a film box top to serve as a straight edge when making horizontal cuts (across the web width) after pulling film out to desired length. Handy for in-field work. Saves the cost of more expensive film cutters.

**GT904 - 3" Roller Assembly (Pair)**  
Comes standard with Film Handler, but can also be purchased separately. These are 6" risers and will accommodate film on 3" cores.

GT910 & GT911



GT904



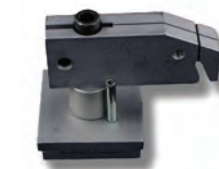
**GT910 - 60" Film Handler**  
Film Handler slitters help reduce waste and save time by helping you make straight, accurate cuts. Uses both metric and imperial measurements. Film Handler can also be wall-mounted for use in automotive shops. *Note: Ladder not included.*

**GT911 - 72" Film Handler**

**GT912 - Film Handler Cutter Assembly**  
Blade holder assembly GT910 & GT911 Film Handlers. This is the base and swivel head of the blade holder.

**GT913 - 12" Film Handler Riser Assembly (Pair)**  
For security film with 6" cores. Sold as a pair. 12" risers accommodate film on 6" cores.

GT912



**GT941 - 1/8" Cutter Shim for 3" Hubs (Each)**

**GT942 - 1/4" Cutter Shim for 3" Hubs (Each)**

**GT986 - Film Handler Blade Holder**  
This is the swivel head portion of the blade holder. *Note: To prevent damage to your Film Handler cutter head/blade holder always move the blade holder from the base not by the swivel head.*

**GT1002 - Clean Cut Box Slitter (36", 48", 60", 72")**  
The new and improved bar is an alloy U-channel in a brushed finish. The bar has a ruler across the top edge for precise measuring and placement of the cutter head. The bar fits securely on the edge of the inner product box to keep everything from moving while making your cut. Simply line the edge of the film up with the zero mark on the ruler and press the bar down on the box. The U-channel can also be used as a straight cutting edge when you are ready to cut the film out of the box.

**GT1002B - Clean Cut Replacement Blades, 5 Pack**  
A five pack of replacement blades for the Clean Cut Cutter Head (GT1002CH).

**GT1002CH - Clean Cut Cutter Head**  
Cutter head assembly for the clean cut box slitter. The Clean Cut Cutter Head is now machined from a composite with two neodymium magnets that provide tremendous attachment to the Clean Cut Bar. The Cutter Head will fit firmly on the back side of the Clean Cut Bar at the measurement you would like to slit the film. Once you have the Cutter Head in place, simply slide the material through the slot and pull to create a clean cut edge.

**GT1002T - Clean Cut Box Tray**  
Allows film boxes to be mounted on top of a ladder.

GT913



GT941



GT942



GT986



GT1002



GT1002B



GT1002CH



GT1002T



**Tip** Using a film cutting system can save time and money by reducing waste and ensuring more accurate cuts. Be sure to keep your blades sharp and always dispose of used blades safely.





GT119



GT120 ★



GT121 ★



GT146 ★



GT237



GT1000



GT1051



GT1052



GT2004 ★★



GT2053 ★★



**GT119 - 4" Tube Squeegee**  
Soft black squeegee with gray PVC handle.

**GT120 - 9" Black Smoothie Tube Squeegee**

**GT121 - 28" Black Smoothie Tube Squeegee**

**GT146 - 28" Black Smoothie Replacement Blade**  
Squeegee tool used for glass cleaning; sometimes called the "Smoothie." Economy size usually cut to shorter lengths before use.

**GT237 - Sunny Tucker**  
This wrap tool provides multi-functionality use by allowing the installer to reach edges and body lines like never before. This tool is a must have if you apply any graphics to challenging surfaces.

**GT1000 - Mac Tac Felt Squeegee**  
Recommended for paint protection or vinyl graphic installations. The soft felt is designed to avoid scratching.

**GT1051 - Olfa SAC-1 Stainless Steel Graphics Knife**  
Slim stainless steel body with a 30 degree angle blade for precision in pattern cutting. Great for graphics and paint protection. Use GT1052 replacement blades.

**GT1052 - A1160B Carbon 30 Degree Snap-off Blades, Pack of 10**  
Standard duty acute angle snap-off blade for use when precision is a must. Seven cutting edges per blade strip. Fits GT1051.

**GT2004 - 18-1/2" Green Turbo**  
The green turbo is perfect for paint protection installs and can be cut down to smaller sizes.

**GT2053 - 4-1/2" Green Turbo**



GT2077-4



GT2077-6



GT2077-8



GT2092



WCBLADE



WCKNIFE



WES



WG1



**GT2077-4 - 4" Cherry Speed Wing (Soft)**  
The Speed Wing is designed with "wings" to enable the installer to reach areas typically out of the reach of most bump, Bondo, Teflon and hard cards. The Speed Wing comes with one flat edge and one curved edge. Speed Wing is made from materials that enable it to slide across most film surfaces easily while maintaining its rigidity to lay the material flat and remove moisture or air trapped underneath.

**GT2077-6 - 6" Cherry Speed Wing (Soft)**

**GT2077-8 - 8" Cherry Speed Wing (Soft)**

**GT2092 - PPF Hybrid 4" Paddle Squeegee**  
The Fusion PPF Hornet is the latest in paint protection film installation tools. This triple-durometer paddle squeegee offers the handler two durometers to install with. The black install side measures in at a firm but flexible 80 durometer and the yellow side at a softer more pliable 70 durometer

**WCBLADE - Replacement Blades for Wrap Cut Knife**  
Replacement blade for the Wrap Cut Knife, WCKNIFE. Each blade has 4 available cutting edges. 10 blades per pack.

**WCKNIFE - Wrap Cut Liner Knife**  
The Wrap Cut Knife is made specifically to cut through just the liner side of any pressure-sensitive vinyl graphic and wrap film so there is no more risk of damaging your film or adhesive or cutting through the film side of your vinyl while on its backing paper. This knife will leave no marks or cut lines in the film when used properly. This knife is made with a solid steel shaft with a special Teflon coating on the bottom surface to protect the vinyl and adhesive. This Teflon coating allows the knife to slide across the adhesive side of the vinyl, giving you a clean and easy cut through the release liner. Use while film is on the vehicle, boat, etc. or while on the cutting table inside the shop. This knife works anywhere and is compatible with most adhesive types and all brands of pressure sensitive vinyls and release liners.

**WES - Wet Edge Squeegee**  
Wrap your vehicles faster and better. The only squeegee applicator made to use wet. No scratches, no marks, just smooth motions that easily glides across vinyl films and painted surfaces without worry of mistakes or damage. The Wet Edge Squeegee is a Teflon squeegee with a unique microfiber bonded to it. Can be used either wet or dry. Colors will vary.

**WG1 - Wrap Gloves, 1 Pair**  
Vehicle wrap gloves are sold in pairs and is a must have for anyone installing vinyl graphics and vehicle wraps. Installing with your bare hands can cause over stretching and puckering of the vinyl as well as potential damage from the transfer of oils on your skin. These lint-free and durable wrap gloves reduce friction while handling the material giving you great results every time.





555164



GT238



GT960



GT961



GT962



GT963



GT967



GT968



GT969



**555164 - Data Logger with Software CD**  
Data Loggers measure and verify the heat rejection of film. Tracking the inside temperature of a room or floor with and without film provides a clear view of how much cooler a building can be by installing window film. Temperatures can be measured for as long as you desire and the Data Logger software will automatically graph the results for you. The information gathered by the Data Logger can be used to satisfy requirements of the International Performance Measurement and Verification Protocol, a widely accepted standard for measuring effectiveness of energy saving products. For instructions on how to use your Data Logger, please refer to the included software CD.

**GT238 - TM2000 Inspector II**  
The TM2000 Inspector II is the newest in light meter technology allowing you to measure ALL windows on vehicles with auto-calibration accurate to within +/- 2%. This meter is 75% smaller than older models and carries a 1 year manufacturer's warranty.

**GT960 - Low-E Coating Detector**  
Detects the presence and location of thermal-resistant (Low-E) coatings used on energy efficient single and dual-pane glass. Never requires calibration. Powered by a 9-volt battery (included).

**GT961 - Insulated Glass Thickness & Gap Gauge**  
Used to measure glass and air space thickness in sealed insulated glass (IG) units. Laser reflections off the glass surfaces appear on the graduated scale of the gauge allowing you to easily determine the thickness of the glass and the air space separating the pieces of glass inside a sealed IG unit. Powered by two standard AAA alkaline batteries (included).

**GT962 - Heat Lamp Unit**  
Great tool for tabletop presentations. Powered by a 110-volt power cord (plug in).

**GT963 - UV Light Source Lamp**  
Excellent tool for demonstrating and measuring how much UV light window film blocks. Powered by four standard AA alkaline batteries (NOT included).

**GT967 - Digital BTU Meter**  
This wide-spectrum digital meter measures the solar radiant energy intensity directly transmitted through glass (or the film-glass combination) in units of BTUs per square foot per hour or watts per square foot. This tool shows the relative effectiveness of various films in blocking solar radiant heat. Especially useful for showing how a darker film may allow more energy to pass through than a much lighter metallic film. Powered by a 9-volt battery (included).

**GT968 - Digital BTU and Transmission Meter**  
Use this meter to evaluate solar performance. It provides excellent resolution; reading low light conditions accurately with no need for adjustments. The digital display toggles between UV intensity and transmission percentage mode. 9-volt battery (included).

**GT969 - Toughened Glass Meter**  
Used to determine which panes in a window unit are heat treated. Knowing this allows use of films that would otherwise be inappropriate on regular annealed glass. Full set of user instructions and leather case included (120-volt).

GT971



GT973



GT975



GT978



GT2035



GT2036



GT972

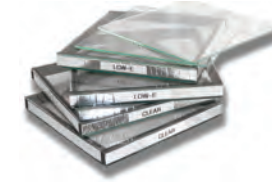


GT974SOFT



Note: not all items pictured here are included in this kit. See description for list of included items

GT976



GT982



GT2064



**GT971 - Soft Case for Meters & Accessories (Case Only)**  
Carry all your meters, glass samples and accessories in this soft-sided case.

**GT972 - Digital Tape Measure**  
This meter uses a narrow beam to measure distances instantly, even through door openings and in crowded rooms. Lifetime lithium battery included.

**GT973 - UV Sentry Meter**  
Position the meter facing a UV source, such as sunlight or a heat lamp and turn the meter on. Place various materials between the meter and the UV source and the resulting UV transmission percentage will be displayed. 9-volt alkaline battery (included).

**GT974SOFT - Professional Meter Sales Kit - with Soft-sided Case**  
A complete package for convenient and convincing sales demonstrations. Includes slots for glass samples, meters, lamps, literature and more.

**Kit Includes:** GT968 Digital BTU & Transmission meter, GT962 Heat Lamp Unit, GT973 UV Meter, GT963 UV light and soft case with carrying strap.  
**Note:** Glass samples are not included in the kit.

**GT975 - Strengthened Glass Detector**  
Allows users to confirm if glass has been strengthened. The detector can test single or multiple panes of glass in a window at once from either side. As a bonus, the detector can even identify the thickness of the first pane of glass in the window. 9-volt alkaline battery (included).

**GT976 - Glass Sample Set**  
Conduct your sales demonstration more effectively by including glass samples to help illustrate the benefits of film over standard glass. Set includes two clear single pane, two clear IG units and two low-E coated panes.

**GT978 - Laser Thermometer**  
Reads temperatures of solid surfaces. Most accurate when used within three feet of a surface. Demonstrate heat reduction by taking a reading of a solid object in the room, such as furniture, before and after the film is installed to show the difference window film makes. Not to be used on glass. 9-volt alkaline battery (included).

**GT982 - Spectrum Detective Meter**  
Demonstrate three performance characteristics at once: UV, visible light and infrared transmission. This is an effective way to show that film will help prevent fading. Simply slide a glass sample into the opening and see the resulting values displayed. No additional light sources are needed. Comes in a convenient padded carrying case. 9-volt alkaline battery (included).

**GT2035 - Tint Check Auto Meter**  
Measures visible light transmission (VLT) on roll down windows. A smaller meter that fits comfortably into a shirt pocket. Calibrated to a NIST traceable standard.

**GT2036 - Tint-Chek + TC2800 Automotive Meter**  
Measures visible light transmission (VLT) on roll down windows. Includes ALL the benefits of the TC1800 (GT2035) plus features a backlit LCD display making it much easier to read in low light conditions. Reads to the nearest tenth percent for greater accuracy. Calibrated to a NIST traceable standard.

**GT2064 - Enforcer II**  
The TM1000 Enforcer II is a light-weight and pocket-sized automotive tint meter. It comes equipped with a coin cell battery that will last for up to 2500 uses and is auto calibrated. For rolldown windows only.



# We have everything you need.

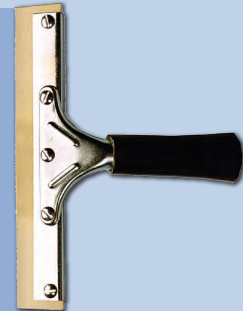
## Tools

Inside this catalog, you will find the most extensive selection of film installation tools available today. We carry several well-known brands of knives, blades, scrapers, squeegees, hard cards and much more!



## Accessories

We offer a wide variety of installation accessories for every job from sprayers to slitters. There is something for everyone and every application challenge.



## Customer Support

At Madico, we understand the value of strong customer relationships. We are committed to providing each of our customers with honest communication and fast, courteous service and support. Whether you need tools, accessories, marketing support or just have a question; we're here for you.

- Your Madico customer service team.



# MADICO®

U.S. 888-887-2022

Worldwide +1-727-327-2544

madico.com • contact@madico.com